

По вопросам продаж и поддержки обращайтесь:

Алматы (7273)495-231	Казань (843)206-01-48	Новокузнецк (3843)20-46-81	Смоленск (4812)29-41-54
Архангельск (8182)63-90-72	Калининград (4012)72-03-81	Новосибирск (383)227-86-73	Сочи (862)225-72-31
Астрахань (8512)99-46-04	Калуга (4842)92-23-67	Омск (3812)21-46-40	Ставрополь (8652)20-65-13
Барнаул (3852)73-04-60	Кемерово (3842)65-04-62	Орел (4862)44-53-42	Сургут (3462)77-98-35
Белгород (4722)40-23-64	Киров (8332)68-02-04	Оренбург (3532)37-68-04	Тверь (4822)63-31-35
Брянск (4832)59-03-52	Краснодар (861)203-40-90	Пенза (8412)22-31-16	Томск (3822)98-41-53
Владивосток (423)249-28-31	Красноярск (391)204-63-61	Пермь (342)205-81-47	Тула (4872)74-02-29
Волгоград (844)278-03-48	Курск (4712)77-13-04	Ростов-на-Дону (863)308-18-15	Тюмень (3452)66-21-18
Вологда (8172)26-41-59	Липецк (4742)52-20-81	Рязань (4912)46-61-64	Ульяновск (8422)24-23-59
Воронеж (473)204-51-73	Магнитогорск (3519)55-03-13	Самара (846)206-03-16	Уфа (347)229-48-12
Екатеринбург (343)384-55-89	Москва (495)268-04-70	Санкт-Петербург (812)309-46-40	Хабаровск (4212)92-98-04
Иваново (4932)77-34-06	Мурманск (8152)59-64-93	Саратов (845)249-38-78	Челябинск (351)202-03-61
Ижевск (3412)26-03-58	Набережные Челны (8552)20-53-41	Севастополь (8692)22-31-93	Череповец (8202)49-02-64
Иркутск (395)279-98-46	Нижний Новгород (831)429-08-12	Симферополь (3652)67-13-56	Ярославль (4852)69-52-93
Россия (495)268-04-70	Киргизия (996)312-96-26-47	Казахстан (7172)727-132	



Big size Triple offset butterfly valve DN1400

Product description:

DBV continues to break through itself, challenging the difficult to produce big size triple offset butterfly valve.

Metal seated triple offset butterfly valve is very stable in our company and it can meet customer's needs for high-quality valves.

Valve Description

Body Material	A105
Nominal Pressure	PN25
Nominal Diameter	DN1400
End Connection	BW
Operation type	Gear box

Test & Inspection	API598
Design Standard	API609

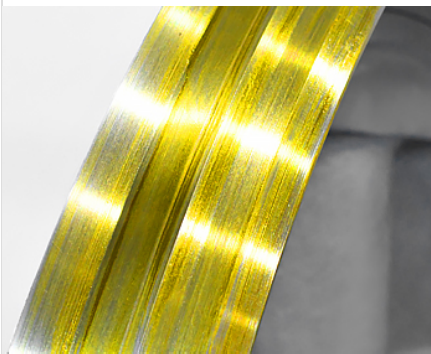
☰ Special Notes : We also can do special material according to customer's requirements

Valve Details



☰ Gear box

Good quality Gear box were assembled to our DBV valves, without special requirements about the actuator, Above 6" will be adopted with Gear box



☰ BW ends

We pay much attention to the BW ends protection. Avoid the welding ends damaged and clean it very carefully.



☰ Typecasting

Every valve in DBV with clear typecasting.



☰ Integral Yoke

Yoke and body casting in whole, this new design is very beautiful and can avoid the leakage on yoke.



Electric Actuated CL150 Butt welded WCB Triple Offset Butterfly Valves

Product description:

Buttwelding Triple Offset Butterfly Valves Material: Body: WCB; Disc: CF8, seat: overlay STL, seal ring: F304+STL





Nominal Pressure PN16 Nominal Diameter: DN700

Valve Description

Body Material	WCB
Nominal Pressure	PN16+
Nominal Diameter	DN700
End Connection	Butt Welding
Operation type	Electric
Test & Inspection	API 598

☰ Special Notes : We also can do special material according to customer's requirements

Valve Details

	<p>☰ Unique Plum Pin Design</p> <p>Adopts the plum pin design, which DBV butterfly valve is different from traditional pin design. As we all know, traditional pin is straight to the stem, but the plum pin is tilted to the stem. From the aspect of application, the plum pin could afford higher pressure and larger diameter.</p>
	<p>☰ Oval Turtle Disc Design</p> <p>DBV butterfly valve adopts the unique oval turtle advantages such as high strength, good flow truss structure design of the disc. It has several characteristics and low flow-resistance coefficient.</p>
	<p>☰ Electric Device</p> <p>DBV butterfly valve selects the actuators made by the best suppliers. Many kinds of electric device can be provided. We could also select the actuator according to the customer's requirement.</p>
	<p>☰ Internal Snap Ring and Bottom Cover Design</p> <p>DBV butterfly valve adopts the unique stem design. The bottom of the stem is slotted. The ring is embedded to prevent the stem blow out. Then, the snapbottom cover plays a same role. This design suits for the valve which is larger than four inches.</p>



Triple offset butterfly valve stem extension

Product description:

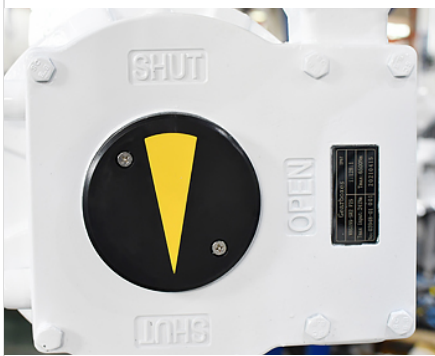
These triple offset butterfly valve are specially customized according to customer requirements. These triple offset butterfly valves are installed in the well with stem extension for easy operation on the well.

Valve Description

Body Material	A105
Nominal Pressure	PN16
Nominal Diameter	DN500
End Connection	BW
Operation type	Gear box
Test & Inspection	EN12266-1

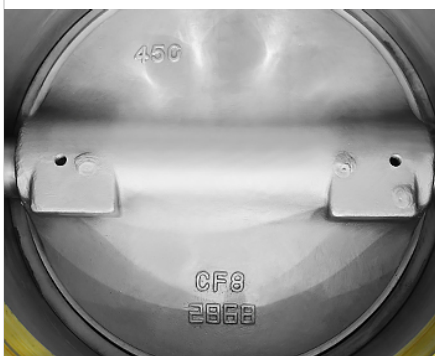
☰ Special Notes : We also can do special material according to customer's requirements

Valve Details



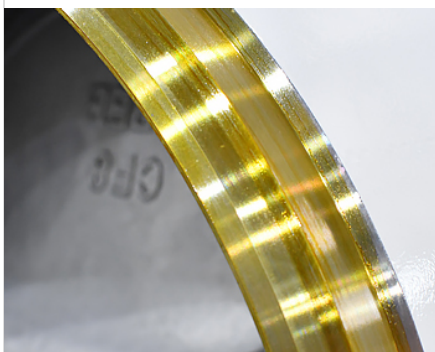
☰ Gear box

Good quality Gear box were assembled to our DBV valves, without special requirements about the actuator, Above 6" will be adopted with Gear box.



☰ Typecasting

Every valve in DBV with clear typecasting and smooth sealing to ensure excellent sealing. Clear the valves surface and valve bore very carefully in every small details.



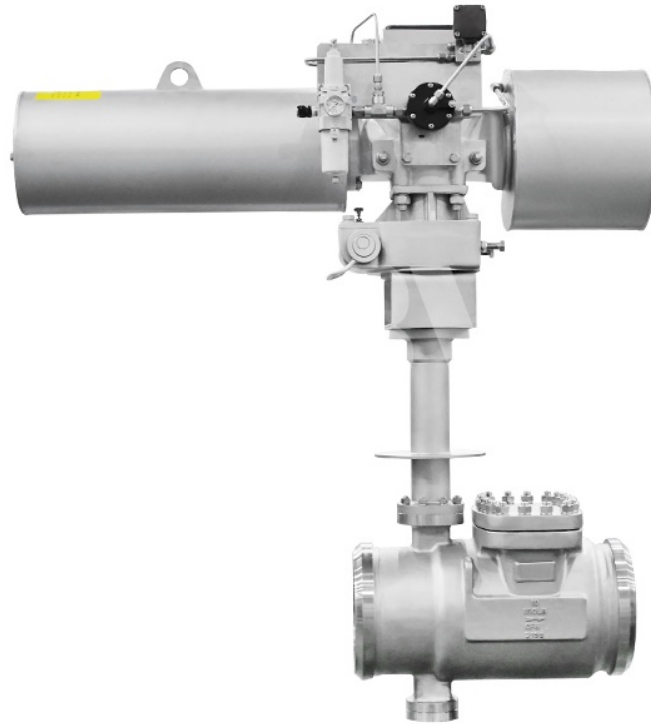
☰ BW connection

We always well protect the end connection and brush the anti-rust oil.



☰ Stem extention

These triple offset butterfly valve are specially customized with stem extention according to customer requirements.



Cryogenic triple offset butterfly valve -196°C

Product description:

DBV metal seated cryogenic butterfly valve has passed the TUV verification at -196°C. With special design to ensure the valve with excellent performance under the low temperature condition.

Valve Description

Body Material	CF8
Nominal Pressure	CL150
Nominal Diameter	10"
End Connection	BW
Operation type	Pneumatic
Test & Inspection	ISO 15848-1

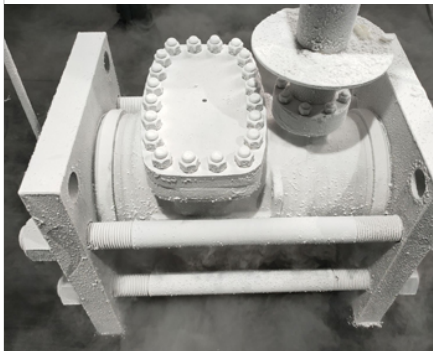
☰ Special Notes : We also can do special material according to customer's requirements

Valve Details



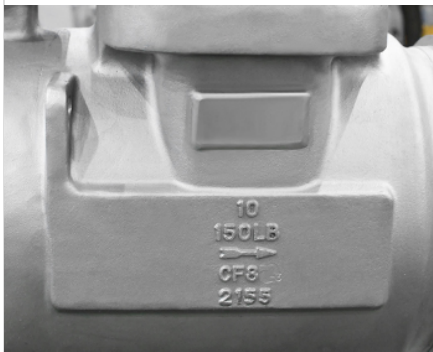
☰ Seat

Renewable seat Stainless steel ASTM A182 F304, We manufacturing them with CNC lathe processing center to ensure the sealing precision.



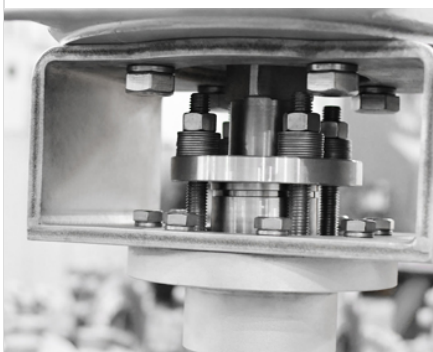
☰ Cryogenic test

Cryogenic test under the low temperature -196°C.



☰ Typecasting

Every valve in DBV with clear typecasting.



☰ Yoke Design

DBV triple offset butterfly valve adopts this design of top flange according to ISO5211. It is very convenient to assemble the actuators.



Worm Gear Class150 48" Buttwelding Triple Offset Butterfly Valves

Product description:

Worm Gear Class150 48" Buttwelding Triple Offset Butterfly Valves Material: Body: WCB; Disc: CF8 seal ring: SS304+graphite Nominal Pressure Class 150 Nominal Diameter: 48"(DN1200)

Valve Description

Body Material	WCB
Nominal Pressure	150#
Nominal Diameter	48"
End Connection	Butt Welding

Operation type	Gear
Test & Inspection	API598
Design Standard	API6D

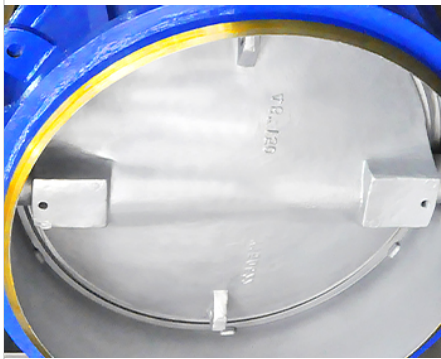
☰ Special Notes : We also can do special material according to customer's requirements

Valve Details



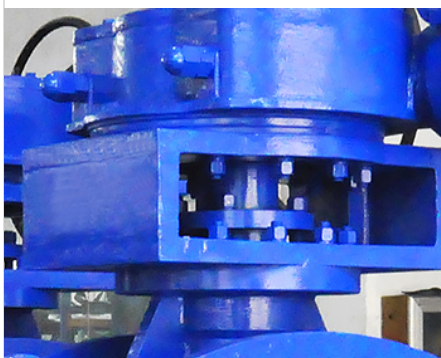
☰ Lifting Lug(Hook)

Have Lifting Lug design, easy to convey and generally suitable for large size and heavy valves



☰ Flat pin design

DBV butterfly valve adopts the design of multi-layer disc sealing ring, sealing by the inside graphite, applied for low and middle pressure, as recycle water, swage treatment, city building, etc



☰ Standard Bolts & Nuts

DBV ball valve adopts the standard bolts and nuts. It could extend the valve longer service life.



Triple Offset Butterfly Valve DN1800 PN6

Product description:

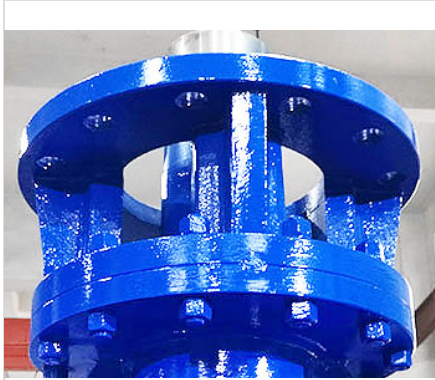
Triple Offset Butterfly Valves Body Material:Q245R Disc: WCB, Stem: A182 F6A, Seat: SS304+Graphite Nominal Diameter:DN1800 Nominal Pressure:PN6 Welded Ends

Valve Description

Body Material	Q245R
Nominal Pressure	PN6
Nominal Diameter	DN1800
End Connection	Butt welded
Operation type	Bare shaft
Test & Inspection	API 598

☰ Special Notes : We also can do special material according to customer's requirements

Valve Details



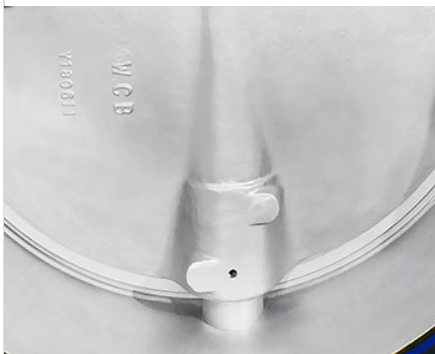
☰ NO.1

The top flange design comply with ISO 5211, The yoke is convenient for assembling worm gear, pneumatic, electric, hydraulic and pneumatic & hydraulic actuators.



☰ NO.2

Accurate processing the disc to ensure excellent sealing. Many big size disc we also have them in stock to ensure short delivery time.



☰ NO.3

Fixed pin to prevent disc from loosening, in this way to ensure stable sealing.



☰ NO.4

Every valve in DBV with clear typecasting. Our big size butterfly valves also can comply with the leakage class A. (Zero Leakage).

По вопросам продаж и поддержки обращайтесь:

Алматы (7273)495-231	Казань (843)206-01-48	Новокузнецк (3843)20-46-81	Смоленск (4812)29-41-54
Архангельск (8182)63-90-72	Калининград (4012)72-03-81	Новосибирск (383)227-86-73	Сочи (862)225-72-31
Астрахань (8512)99-46-04	Калуга (4842)92-23-67	Омск (3812)21-46-40	Ставрополь (8652)20-65-13
Барнаул (3852)73-04-60	Кемерово (3842)65-04-62	Орел (4862)44-53-42	Сургут (3462)77-98-35
Белгород (4722)40-23-64	Киров (8332)68-02-04	Оренбург (3532)37-68-04	Тверь (4822)63-31-35
Брянск (4832)59-03-52	Краснодар (861)203-40-90	Пенза (8412)22-31-16	Томск (3822)98-41-53
Владивосток (423)249-28-31	Красноярск (391)204-63-61	Пермь (342)205-81-47	Тула (4872)74-02-29
Волгоград (844)278-03-48	Курск (4712)77-13-04	Ростов-на-Дону (863)308-18-15	Тюмень (3452)66-21-18
Вологда (8172)26-41-59	Липецк (4742)52-20-81	Рязань (4912)46-61-64	Ульяновск (8422)24-23-59
Воронеж (473)204-51-73	Магнитогорск (3519)55-03-13	Самара (846)206-03-16	Уфа (347)229-48-12
Екатеринбург (343)384-55-89	Москва (495)268-04-70	Санкт-Петербург (812)309-46-40	Хабаровск (4212)92-98-04
Иваново (4932)77-34-06	Мурманск (8152)59-64-93	Саратов (845)249-38-78	Челябинск (351)202-03-61
Ижевск (3412)26-03-58	Набережные Челны (8552)20-53-41	Севастополь (8692)22-31-93	Череповец (8202)49-02-64
Иркутск (395)279-98-46	Нижний Новгород (831)429-08-12	Симферополь (3652)67-13-56	Ярославль (4852)69-52-93
Россия (495)268-04-70	Киргизия (996)312-96-26-47	Казахстан (7172)727-132	